

BOX SCORE: *** FINAL ***

Date: 03-18-88 Site: State Tourney, Louisville Attendance: 19,486

Team: LaRue County

NO.	NAME	TOTAL FG		3-POINT		FT	FTA	REB				PF	TP	A	TO	BLK	S	MIN
		FG	FGA	FG	FGA			O	D	T	T							
30	Boley, Scott	8	15	1	3	5	6	2	1	3	3	22	0	1	2	0	30	
34	Childress, J.J.	1	3	0	0	4	4	0	1	1	3	6	3	2	0	1	25	
22	Reuter, Jason	1	6	0	0	3	4	1	5	6	3	5	0	2	0	1	27	
14	Childress, Paul	5	11	4	10	2	4	1	3	4	3	16	3	3	0	0	29	
20	Abrams, Cliff	1	5	0	3	0	0	1	1	2	1	2	1	1	0	2	28	
32	Simpkins, Bobby	0	1	0	0	0	0	0	0	0	2	0	0	0	0	1	4	
24	Pruitt, Mark	0	3	0	1	0	2	2	1	3	1	0	0	1	0	0	6	
12	Lee, Jason	0	1	0	0	0	0	0	0	0	0	0	0	0	0	0	3	
50	Wootton, Travis	0	1	0	1	2	2	0	0	0	0	2	0	1	0	0	4	
42	Best, Steve	0	0	0	0	0	0	0	0	0	0	0	0	0	0	0	1	
10	Miller, Patrick	0	0	0	0	0	0	0	0	0	0	0	0	0	0	0	2	
51	Sardidge, Scott	0	0	0	0	1	2	1	0	1	0	1	0	0	0	0	1	
TEAM		1 / 1						1	0	1	0							
TOTALS		16 / 47		5 / 18		17	24	9	12	21	16	54	7	11	2	5	160	
Percentages:		Game-----		FG		16 / 47	34.0%	3-PT.		5 / 18	27.8%	FT		17 / 24	70.8%			
		Period 1		4 / 10		40.0%			1 / 4	25.0%			4 / 5	80.0%				
		Period 2		7 / 11		63.6%			2 / 4	50.0%			2 / 2	100.0%				
		Period 3		4 / 14		28.6%			2 / 5	40.0%			1 / 1	100.0%				
		Period 4		1 / 12		8.3%			0 / 5	0.0%			10 / 16	62.5%				

Team: Clay County

NO.	NAME	TOTAL FG		3-POINT		FT	FTA	REB				PF	TP	A	TO	BLK	S	MIN
		FG	FGA	FG	FGA			O	D	T	T							
20	Jackson, Kevin	3	7	0	0	0	0	3	1	4	2	6	0	1	1	2	27	
22	Farmer, Russ	6	8	3	4	6	6	1	2	3	2	21	0	1	0	0	29	
54	Rawlings, E.	3	3	0	0	1	1	4	4	8	2	7	0	1	0	1	22	
10	Chadwell, Russ	6	10	0	0	4	4	0	5	5	2	16	1	0	1	0	25	
32	Farmer, Richie	10	21	1	2	9	10	0	7	7	3	30	4	2	0	1	28	
30	Gilbert, A.	0	0	0	0	0	2	1	1	2	4	0	0	1	0	0	8	
50	Gray, Terry	0	0	0	0	3	4	0	0	0	4	3	0	1	0	0	8	
42	Blair, David	1	2	0	0	0	0	1	1	2	2	2	0	0	0	0	4	
24	Collins, Lloyd	0	2	0	0	0	0	0	1	1	1	0	0	0	0	0	3	
12	Nicholson, R.	1	1	0	0	0	0	1	1	2	0	2	0	0	0	0	3	
40	Sasser, Todd	2	2	0	0	0	0	1	1	2	0	4	0	0	0	1	2	
44	Hicks, M.	0	0	0	0	0	0	0	1	1	0	0	1	0	0	0	1	
TEAM		32 / 56		4 / 6		23	27	12	25	37	22	91	6	7	2	5	160	
Percentages:		Game-----		FG		32 / 56	57.1%	3-PT.		4 / 6	66.7%	FT		23 / 27	85.2%			
		Period 1		11 / 18		61.1%			1 / 2	50.0%			1 / 1	100.0%				
		Period 2		5 / 10		50.0%			2 / 2	100.0%			10 / 10	100.0%				
		Period 3		7 / 13		53.8%			0 / 0	0.0%			6 / 6	100.0%				
		Period 4		9 / 15		60.0%			1 / 2	50.0%			6 / 10	60.0%				

OFFICIALS: Mike Carter, Marvin Moore, Alt. - Jay Davis
 Technicals: None

SCORE BY PERIODS					
LaRue County	13	18	11	12	= 54
Clay County	24	22	20	25	= 91

LaRue County "Hawks" vs Clay County "Tigers"
2nd Half Play by Play

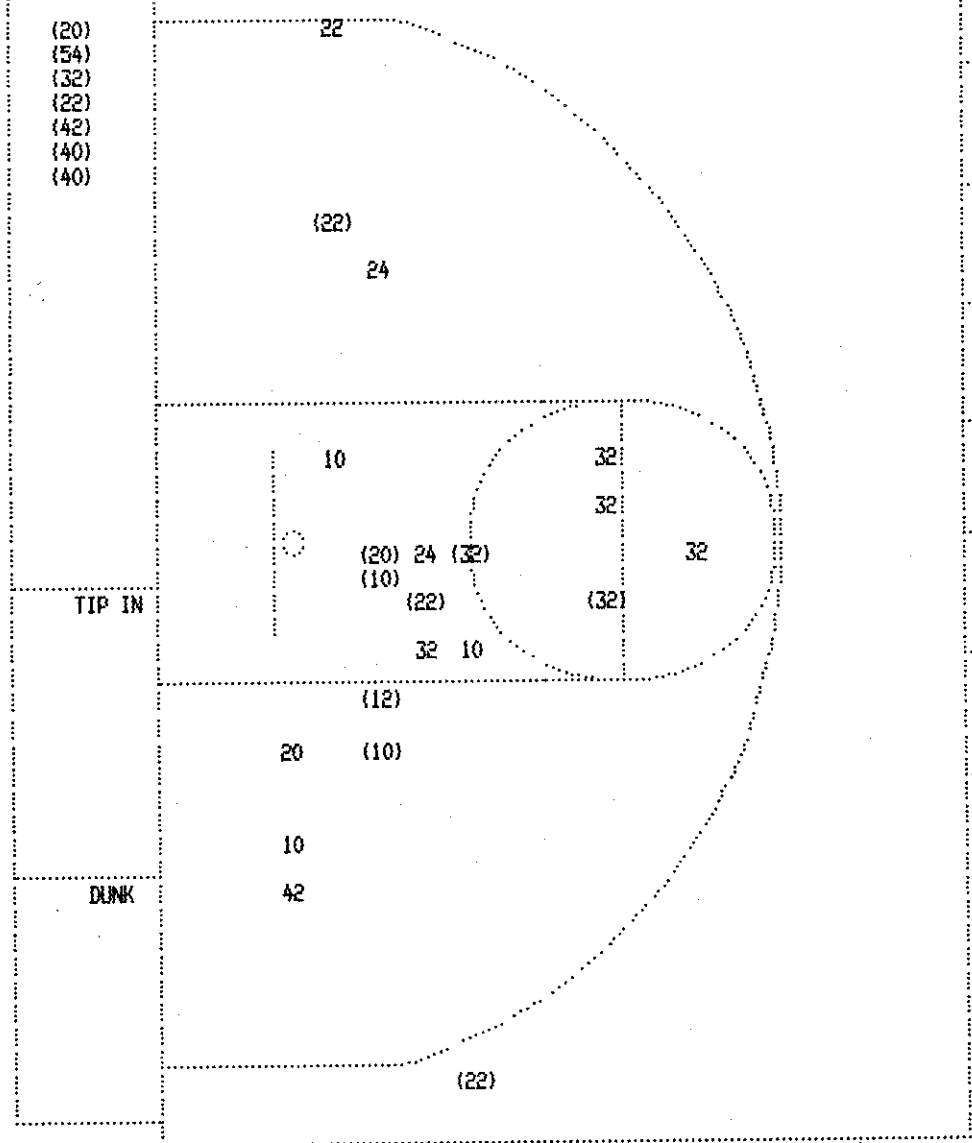
Tip off at 7:30 p.m. on 03/18/88 at State Tourney, Louisville
Produced by the K.H.S.A.A. Stat Crew with FINAL III**

PAGE : 2

Player		Team	Clay County	Time	Score	LaRue County	Player	Team
			Russ, Rawlings, E., Chadwell, Russ, Farmer, Richie Ball to Tigers			Boley, Scott, Childress, J.J., Reuter, Jason, Childress, Paul, Abrams, Cliff		
4-5	80.0%	24-42	57.1%	14 ft Right Base Line Jump shot by Farmer, Russ	4 7:47	*68-42		
	2		5	Foul on Jackson, Kevin	4 7:32			
					4 7:32	68-44*	Boley, Scott, 1 & Bonus made both	3-4 75.0% 9-10 90.0%
5-8	62.5%	25-43	58.1%	8 ft Left Side Bank by Chadwell, Russ	4 7:19	*70-44		
	2		6	Foul on Farmer, Richie	4 7:04			
				Sub In: Gray, Terry Out: Rawlings, E.	4 7:03	70-46*	Boley, Scott, 1 & Bonus made both	5-6 83.3% 11-12 91.6%
					4 6:20		Sub In: Pruitt, Mark Out: Childress, J.J.	
					4 5:58			
6-6	100%	19-19	100%	Farmer, Russ, 1 & Bonus made both	4 5:50	*72-46	3 6	
	3		7	Foul on Gray, Terry	4 5:41			
					4 5:41	72-47*	Reuter, Jason, 1 & Bonus made 1st missed 2nd	3-4 75.0% 12-14 85.7%
					4 5:30		Foul on Abrams, Cliff	
9-10	90.0%	20-21	95.2%	Farmer, Richie, 2 Free Throws made 1st missed 2nd	4 5:30	*73-47		
	2		8	Sub In: Gilbert, A. Out: Jackson, Kevin	4 5:01			
				Foul on Farmer, Russ	4 5:01	73-48*	Childress, Paul, 2 Free Throws missed 1st made 2nd	1-2 50.0% 13-16 81.2%
			REB: 28 A: 4 BLK: 2 TD: 6 PF: 8 S: 4 FT: 20-21 95.2% FG: 25-44 56.8% No. 1 Clay County			REB: 15 A: 7 BLK: 2 TD: 8 PF: 7 S: 4 FT: 13-16 81.2% FG: 15-39 38.4%		
					T I M E - O U T			
5-6	83.3%	26-45	57.7%	3 pt 23 ft Left Side Jump shot by Farmer, Russ	4 4:43	*76-48		
	4		5	Assist by Farmer, Richie	4 4:30	76-50*	3 ft Lane Driving by Childress, Paul	
				Foul on Farmer, Richie	4 4:07		5-10 50.0% 16-40 40.0%	
				Sub In: Blair, David Out: Farmer, Richie	4 4:07	76-51*	Childress, Paul, 2 Free Throws missed 1st made 2nd	
6-7	85.7%	27-47	57.4%	4 ft Lane Jump shot by Farmer, Russ	4 4:07	*78-51	2-4 50.0% 14-18 77.7%	
	4		10	Foul on Gilbert, A.	4 3:36			
					4 3:36		Sub In: Lee, Jason Out: Childress, Paul	
					4 3:36		Sub In: Wootton, Travis Out: Abrams, Cliff	
					4 3:36		Pruitt, Mark, 1 & Bonus missed 1st	
6-10	60.0%	28-48	58.3%	2 ft Lane Driving by Chadwell, Russ	4 3:27	*80-51	0-1 00.0% 14-19 73.6%	
	4		11	Foul on Gray, Terry	4 2:57			
				Sub In: Collins, Lloyd Out: Farmer, Russ	4 2:57			
				Sub In: Nicholson, R. Out: Chadwell, Russ	4 2:57			
					4 2:57		Pruitt, Mark, 1 & Bonus missed 1st	
1-2	50.0%	29-52	55.7%	Follow Layup by Blair, David	4 2:08	*82-51	0-2 00.0% 14-20 70.0%	
				Sub In: Sasser, Todd Out: Gilbert, A.	4 1:43		3 8	
					4 1:43		Sub In: Simpkins, Bobby Out: Reuter, Jason	
					4 1:43		Sub In: Best, Steve Out: Boley, Scott	
					4 1:43			
			REB: 32 A: 5 BLK: 2 TD: 6 PF: 11 S: 4 FT: 20-21 95.2% FG: 29-52 55.7%			REB: 19 A: 7 BLK: 2 TD: 10 PF: 8 S: 4 FT: 14-20 70.0% FG: 16-44 36.3%		
					T I M E - O U T LaRue County No. 2			
1-2	50.0%	21-23	91.3%	Gray, Terry, 2 Free Throws missed 1st made 2nd	4 1:43	*83-51		
					4 1:18		Foul on Pruitt, Mark	
					4 1:18		Sub In: Miller, Patrick Out: Pruitt, Mark	
3-4	75.0%	23-25	92.0%	Gray, Terry, 1 & Bonus made both	4 1:18	*85-51		
	1		12	Sub In: Gilbert, A. Out: Gray, Terry	4 1:01			
				Foul on Collins, Lloyd	4 1:01		Sub In: Sandidge, Scott Out: Simpkins, Bobby	
					4 1:01	85-53*	Wootton, Travis, 2 Free Throws made both	2-2 100% 16-22 72.7%
0-2	00.0%	23-27	85.1%	Foul on Blair, David	4 0:52			
				Gilbert, A., 2 Free Throws missed both	4 0:51			
1-1	100%	30-53	56.6%	6 ft Left Side Follow by Nicholson, R.	4 0:49	*87-53		
	2		14	Foul on Blair, David	4 0:32			
				Sub In: Hicks, M. Out: Gilbert, A.	4 0:32			
					4 0:32	87-54*	Sandidge, Scott, 2 Free Throws made 1st missed 2nd	1-2 50.0% 17-24 70.8%
1-1	100%	31-55	56.3%	Follow Layup by Sasser, Todd	4 0:24	*89-54		
2-2	100%	32-56	57.1%	Layup Off Fast Break by Sasser, Todd	4 0:04	*91-54		
	1		6	Assist by Hicks, M.				

Player	Team	Clay County	Time	Score	LaRue County	Player	Team
Jackson, Kevin	Farmer	Russ, Rawlings, E., Chadwell, Russ, Farmer, Richie			Boley, Scott, Childress, J.J., Reuter, Jason, Childress, Paul, Abrams, Cliff		
		Ball to Tigers					
2-5	40.0%	17-30 56.6%	3 7:47	*48-31			
		Follow Layup by Jackson, Kevin	3 7:08				
1		Foul on Farmer, Russ	3 6:32				
2		Foul on Rawlings, E.	3 6:16		Player Control Foul on Childress, J.J.	1	1
			3 6:01		Foul on Boley, Scott	3	2
3-3	100%	18-34 52.9%	3 5:57	*50-31			
8-17	47.0%	19-36 52.7%	3 4:51	*52-31			
		Follow Layup by Rawlings, E.					
		Driving Layup by Farmer, Richie					
		REB: 20 A: 4 BLK: 1 TO: 1 PF: 2	3 4:47		REB: 9 A: 6 BLK: 2 TO: 7 PF: 2		
		S: 3 FT: 11-11 100% FG: 19-36 52.7%	T I M E - O U T	LaRue County No. 1	S: 2 FT: 6-7 85.7% FG: 11-25 44.0%		
			3 4:08		Foul on Childress, Paul	2	3
2-2	100%	13-13 100%	3 4:08	*54-31			
		Farmer, Russ, 2 Free Throws made both	3 3:34		Foul on Childress, J.J.	2	4
		Sub In: Gray, Terry Out: Rawlings, E.	3 3:34				
4-4	100%	15-15 100%	3 3:34	*56-31			
		Chadwell, Russ, 2 Free Throws made both	3 3:21	56-34*	3 pt 22 ft Left Side Jump shot by Childress, Paul	3-6	50.0% 12-29 41.3%
1		Foul on Gray, Terry	3 3:05		3 pt 22 ft Left Angle Jump shot by Childress, Paul	4-8	50.0% 13-31 41.9%
			3 2:43	56-37*	Assist by Childress, J.J.	3	7
9-19	47.3%	20-38 52.6%	3 2:29	*58-37			
3-4	75.0%	21-39 53.8%	3 2:03	*60-37			
		12 ft Lane Turnaround by Farmer, Richie	3 1:37	60-39*	3 ft Lane Follow by Boley, Scott	7-12	58.3% 14-34 41.1%
		Driving Flip by Farmer, Russ	3 0:58		Foul on Childress, J.J.	3	5
4-4	100%	17-17 100%	3 0:55	*62-39			
		Farmer, Russ, 1 & Bonus made both	3 0:55		Sub In: Pruitt, Mark Out: Childress, J.J.		
3-7	42.8%	22-40 55.0%	3 0:25	*64-39			
		2 ft Lane Jump shot by Jackson, Kevin	3 0:13	64-41*	Driving Layup by Boley, Scott	8-13	61.5% 15-35 42.8%
2		Foul on Gray, Terry	3 0:13				
			3 0:13	64-42*	Boley, Scott, 1 Free Throw made	1-2	50.0% 7-8 87.5%
10-20	50.0%	23-41 56.0%	3 0:03	*66-42			
		6 ft Lane Driving by Farmer, Richie					

(20)
(54)
(32)
(22)
(42)
(40)
(40)



TIP IN

DUNK

Clay County

Player	Player	Player	Player	Player	Player
20 - Jackson, K	2 / 3	66.6%	12 - Nicholson, L	1 / 1	100.0%
22 - Farmer, Ru	4 / 5	80.0%	24 - Collins, L	0 / 2	0.0%
54 - Rawlings, R	1 / 1	100.0%	40 - Sasser, To	2 / 2	100.0%
10 - Chadwell, C	2 / 5	40.0%	42 - Blair, Dav	1 / 2	50.0%
32 - Farmer, Ri	3 / 7	42.8%			
Layups	1-9 Ft	10-15 Ft	Over 15 Ft	3 Pointers	Total
7 / 7	6 / 11	2 / 7	0 / 1	1 / 2	16 / 28
100.0%	54.5%	28.6%	0.0%	50.0%	57.1%

LaRue County

Player	Player	Player	Player	Player	Player
30 - Roley, Sco	2 / 7	28.5%	12 - Lee, Jason	0 / 1	0.0%
34 - Childress, C	0 / 2	0.0%	24 - Pruitt, Ma	0 / 3	0.0%
22 - Reuter, Ja	0 / 3	0.0%	32 - Simpkins, S	0 / 1	0.0%
14 - Childress, C	3 / 6	50.0%	50 - Wootton, T	0 / 1	0.0%
20 - Abrams, Cl	0 / 1	0.0%			
Layups	1-9 Ft	10-15 Ft	Over 15 Ft	3 Pointers	Total
1 / 3	2 / 2	0 / 6	0 / 5	2 / 10	5 / 26
33.3%	100.0%	0.0%	0.0%	20.0%	19.2%

SCORE: * OFFICIAL FIRST HALF * Date: 03-18-88 Site: State Tourney, Louisville Attendance:
 am: LaRue County

NAME	TOTAL FG		3-POINT		FT	FTA	REB			PF	TP	A	TO	BLK	S	MIN
	FG	FGA	FG	FGA			O	D	T							
Boley, Scott	6	8	1	1	0	1	0	0	0	2	13	0	0	2	0	16
Childress, J.J.	1	1	0	0	4	4	0	1	1	0	6	2	0	0	0	16
Reuter, Jason	1	3	0	0	2	2	1	3	4	2	4	0	1	0	0	13
Childress, Paul	2	5	2	5	0	0	0	2	2	1	6	3	2	0	0	16
Abrams, Cliff	1	4	0	2	0	0	0	0	0	0	2	1	1	0	1	16
Simpkins, Bobby	0	0	0	0	0	0	0	0	0	2	0	0	0	0	0	3
TEAM																
TOTALS	11	21	3	8	6	7	1	6	7	7	31	6	4	2	1	80
Percentages:	HALF-----		FG		11/ 21	52.4%	3-PT.		3/ 8	37.5%	FT		6/ 7	85.7%		
	Period 1				4/ 10	40.0%			1/ 4	25.0%			4/ 5	80.0%		
	Period 2				7/ 11	63.6%			2/ 4	50.0%			2/ 2	100.0%		

am: Clay County

NAME	TOTAL FG		3-POINT		FT	FTA	REB			PF	TP	A	TO	BLK	S	MIN
	FG	FGA	FG	FGA			O	D	T							
Jackson, Kevin	1	4	0	0	0	0	2	1	3	1	2	0	0	0	0	16
Farmer, Russ	2	3	2	2	0	0	0	1	1	0	6	0	0	0	0	16
Rawlings, E.	2	2	0	0	1	1	2	1	3	1	5	0	0	0	1	16
Chadwell, Russ	4	5	0	0	2	2	0	2	2	2	10	1	0	0	0	12
Farmer, Richie	7	14	1	2	8	8	0	3	3	1	23	3	0	0	1	16
Gilbert, A.	0	0	0	0	0	0	1	1	2	3	0	0	0	0	0	4
TEAM																
TOTALS	16	28	3	4	11	11	5	9	14	8	46	4	0	0	2	80
Percentages:	HALF-----		FG		16/ 28	57.1%	3-PT.		3/ 4	75.0%	FT		11/ 11	100.0%		
	Period 1				11/ 18	61.1%			1/ 2	50.0%			1/ 1	100.0%		
	Period 2				5/ 10	50.0%			2/ 2	100.0%			10/ 10	100.0%		

ICIALS: Mike Carter, Marvin Moore, Alt.-Jay Davis
 hricals: None

SCORE BY PERIODS

LaRue County	13	18	=	31
Clay County	24	22	=	46

uced by the K.H.S.A.A. Stat Crew with FINAL III™

Clay County "Hawks" vs Clay County "Tigers"
 Half Play by Play

Tip off at 7:30 p.m. on 03/18/88 at State Tourney, Louisville
 Produced by the K.H.S.A.A. Stat Crew with FINAL III**

PAGE : 2

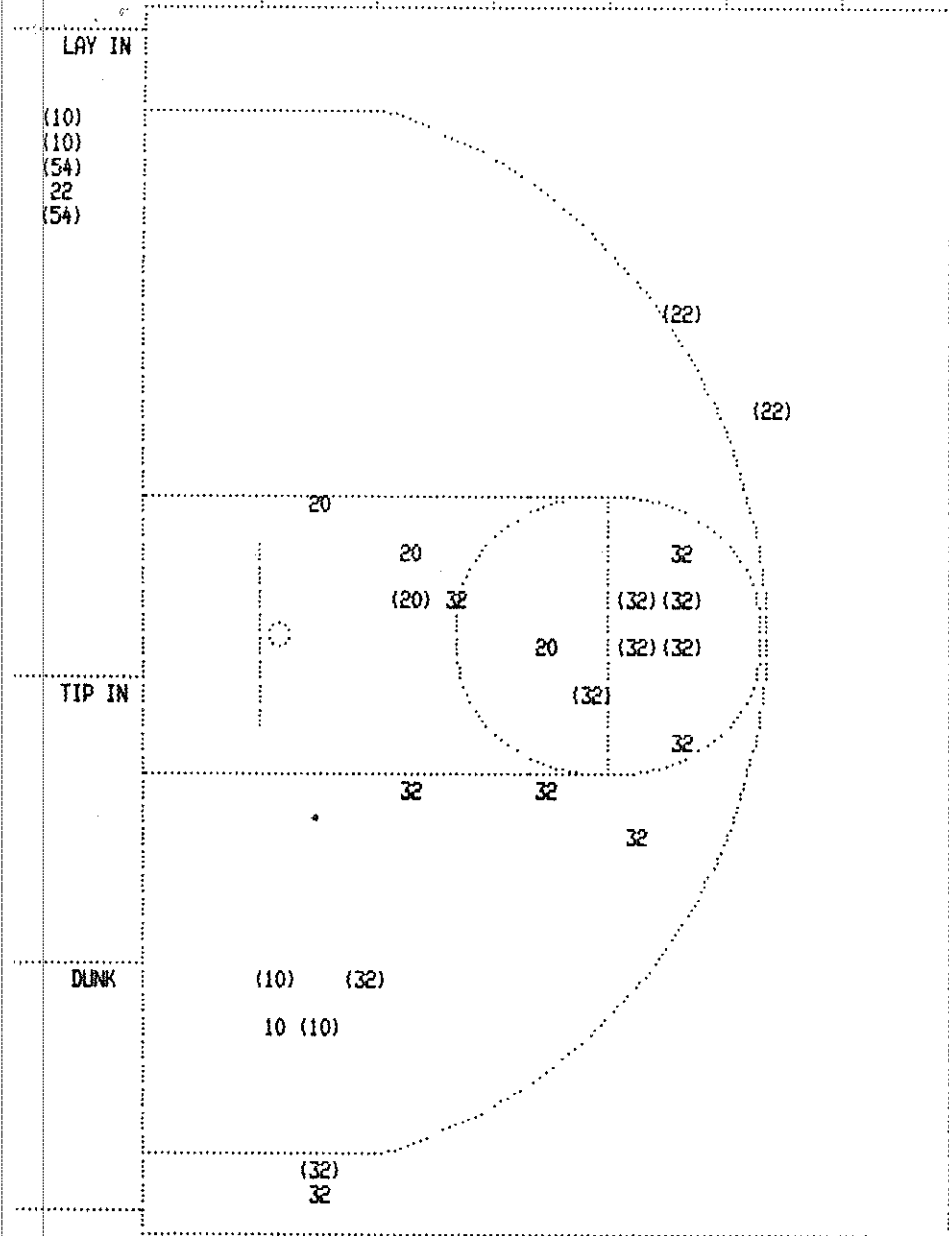
Clay County	Team	Player	Time	Score	LaRue County	Player	Team
100%	12-22	54.5%	Follow Layup by Rawlings, E.	2 6:27	*26-17		
100%	3-3	100%	Farmer, Richie, 2 Free Throws made both	2 6:11	*26-20*	3 pt 22 ft Left Base Line Jump shot by Boley, Scott Assist by Childress, Paul	5-6 83.3% 7-14 50.0%
50.0%	13-23	56.5%	3 pt 21 ft Right Angle Jump shot by Farmer, Russ Assist by Chadwell, Russ	2 5:47	*28-20	Foul on Boley, Scott	2 3
33.3%	14-24	58.3%	4 ft Lane Driving by Jackson, Kevin	2 5:28	*28-22*	18 ft Left Base Line Jump shot by Abrams, Cliff Assist by Childress, Paul	1-3 33.3% 8-15 53.3%
100%	5-5	100%	Chadwell, Russ, 2 Free Throws made both Sub In: Gilbert, A. Out: Chadwell, Russ	2 5:08	*31-22		3 4
66.6%	15-27	55.5%	3 pt 22 ft Right Angle Jump shot by Farmer, Russ Assist by Farmer, Richie	2 4:36	*33-22		
			Sub In: Chadwell, Russ Out: Gilbert, A.	2 3:07	*33-24*	14 ft Right Base Line Turnaround by Reuter, Jason	1-3 33.3% 9-18 50.0%
100%	7-7	100%	Farmer, Richie, 2 Free Throws made both Foul on Gilbert, A. Sub In: Chadwell, Russ Out: Gilbert, A.	2 2:51		Foul on Reuter, Jason	2 3
			Sub In: Gilbert, A. Out: Chadwell, Russ	2 2:51	*35-24	Sub In: Simpkins, Bobby Out: Reuter, Jason	
50.0%	16-28	57.1%	14 ft Lane Turnaround by Farmer, Richie	2 2:51	35-26*	Shot by Boley, Scott Assist by Abrams, Cliff	6-8 75.0% 10-19 52.6%
100%	9-9	100%	Farmer, Richie, 2 Free Throws made both Sub In: Chadwell, Russ Out: Gilbert, A.	2 2:23	*38-26		1 5
100%	11-11	100%	Farmer, Richie, 2 Free Throws made both	2 2:01		Foul on Childress, Paul	1 4
				2 2:01		Foul on Childress, Paul	1 4
				2 1:51		Foul on Simpkins, Bobby	1 5
				2 1:51		Foul on Simpkins, Bobby	1 5
				2 1:51	*40-26		
				2 1:24			
				2 1:24	40-28*	Childress, J.J., 1 & Bonus made both	4-4 100% 6-7 85.7%
				2 1:12		Foul on Simpkins, Bobby	2 6
				2 1:12	*42-28		
				2 1:02			
				2 1:02	*44-28		
				2 0:31	44-31*	3 pt 22 ft Right Base Line Jump shot by Childress, Paul Assist by Childress, J.J.	2-5 40.0% 11-21 52.3%
				2 0:03		Foul on Boley, Scott	2 7
				2 0:03	*46-31		

LaRue County "Hawks" vs Clay County "Tigers"
1st Half Play by Play

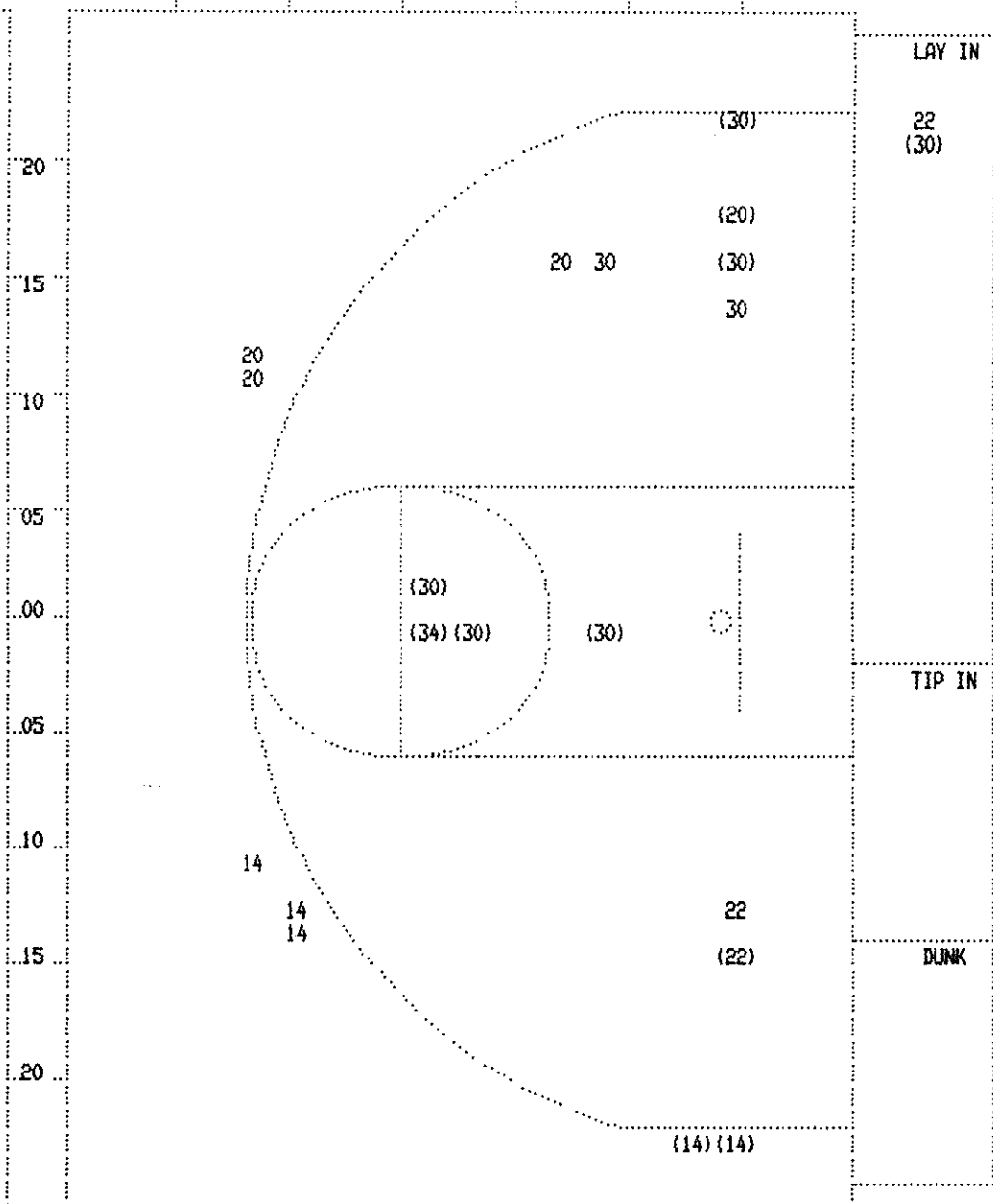
Tip off at 7:30 p.m. on 03/18/88 at State Tourney, Louisville
Produced by the K.H.S.A.A. Stat Crew with FINAL III**

PAGE : 1

Player	Team	Clay County	Time	Score	LaRue County	Player	Team						
Jackson, Kevin	Farmer, Russ	Rawlings, E., Chadwell, Russ			Boley, Scott, Childress, J.J., Reuter, Jason, Childress, Paul, Abrams, Cliff								
		Ball to Tigers											
1	1	Foul on Rawlings, E.	1	7:46									
1	2	Foul on Jackson, Kevin	1	7:06									
1-2	50.0%	1-4	25.0%	Driving Layup by Chadwell, Russ	1	6:38	*2-0						
1	3	Foul on Farmer, Richie	1	6:18									
			1	5:53	2-2*	4 ft Lane Turnaround by Boley, Scott	1-1	100%	1-2	50.0%			
						Assist by Childress, Paul	1		1				
1-2	50.0%	2-5	40.0%	16 ft Circle Jump shot by Farmer, Richie	1	5:38	*4-2						
2-3	66.6%	3-6	50.0%	Driving Reverse Lay Up by Chadwell, Russ	1	5:13	*6-2						
					1	4:57	6-4*	16 ft Left Base Line Jump shot by Boley, Scott	2-3	66.6%	2-4	50.0%	
3-4	75.0%	4-7	57.1%	14 ft Left Base Line Jump shot by Chadwell, Russ	1	4:42	*8-4						
				Assist by Farmer, Richie									
					1	4:15	8-7*	3 pt 22 ft Right Base Line Jump shot					
								by Childress, Paul	1-1	100%	3-6	50.0%	
2-3	66.6%	5-8	62.5%	3 pt 22 ft Left Base Line Jump shot by									
				Farmer, Richie	1	3:59	*11-7						
					1	3:41	11-9*	12 ft Lane Jump shot by Childress, J.J.	1-1	100%	4-7	57.1%	
1-1	100%	6-10	60.0%	Follow Layup by Rawlings, E.	1	3:22	*13-9						
					1	3:22		Foul on Reuter, Jason					
1-1	100%	1-1	100%	Rawlings, E., 1 Free Throw made	1	3:22	*14-9						
4-5	80.0%	7-11	63.6%	16 ft Left Base Line Jump shot by Chadwell, Russ	1	2:57	*16-9						
				Assist by Farmer, Richie									
				Foul on Chadwell, Russ	1	2:46							
3-5	60.0%	8-12	66.6%	14 ft Left Side Turnaround by Farmer, Richie	1	2:23	*18-9						
				REB: 6 A: 2 BLK: 0 TD: 0 PF: 4	1	2:19		REB: 2 A: 1 BLK: 0 TD: 1 PF: 1					
				S: 0 FT: 1-1 100% FG: 8-12 66.6%				S: 0 FT: 0-0 00.0% FG: 4-9 44.4%					
				TIME - O U T LaRue County No. 1									
					1	2:11							
				Foul on Chadwell, Russ	1	2:11							
				Sub In: Gilbert, A. Out: Chadwell, Russ									
4-6	66.6%	9-13	69.2%	14 ft Lane Jump shot by Farmer, Richie	1	2:00	*20-9	Boley, Scott, 1 & Bonus missed 1st	0-1	00.0%	0-1	00.0%	
				Foul on Gilbert, A.	1	1:42							
					1	1:42	20-11*	Reuter, Jason, 2 Free Throws made both	2-2	100%	2-3	66.6%	
5-7	71.4%	10-14	71.4%	12 ft Lane Turnaround by Farmer, Richie	1	1:32	*22-11						
				Foul on Gilbert, A.	1	1:18							
					1	1:18	22-13*	Childress, J.J., 1 & Bonus made both	2-2	100%	4-5	80.0%	
6-10	60.0%	11-18	61.1%	16 ft Circle Bank by Farmer, Richie	1	0:03	*24-13						



Clay County					
Player	Player	Player	Player	Player	Player
- Jackson, K	1 / 4	25.0%			
- Farmer, Ru	2 / 3	66.6%			
- Rawlings,	2 / 2	100.0%			
- Chadwell,	4 / 5	80.0%			
- Farmer, Ri	7 / 14	50.0%			
Layups	1-9 Ft	10-15 Ft	Over 15 Ft	3 Pointers	Total
1 / 5	1 / 5	5 / 7	3 / 7	3 / 4	16 / 28
0.0%	20.0%	71.4%	42.9%	75.0%	57.1%



LaRue County					
Player	Player	Player	Player	Player	Player
30 - Boley, Sco	6 / 8	75.0%			
34 - Childress,	1 / 1	100.0%			
22 - Reuter, Ja	1 / 3	33.3%			
14 - Childress,	2 / 5	40.0%			
20 - Abrams, Cl	1 / 4	25.0%			
Layups	1-9 Ft	10-15 Ft	Over 15 Ft	3 Pointers	Total
1 / 2	1 / 1	4 / 6	2 / 4	3 / 8	11 / 21
50.0%	100.0%	66.7%	50.0%	37.5%	52.4%